

INDICATOR/ALARM UNIT GP-6001 SPECIFICATION

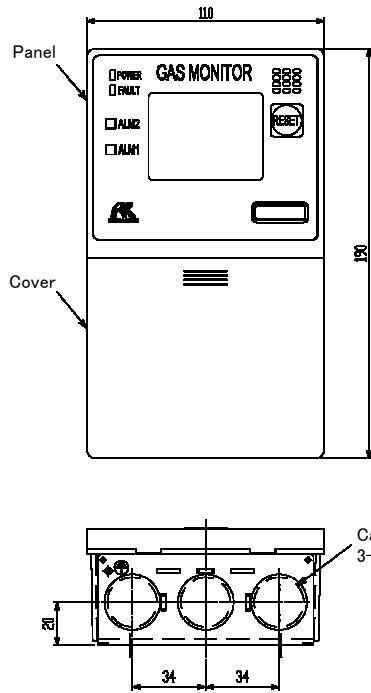
Detectable gas [※]	Combustible gas
Applicable detector head	Catalytic combustion method gas detector head
Gas concentration display	LCD(digital and bar-meter display<three colors:green, orange, red>>)
Power indication	POWER lamp lighting(green)
Gas alarm type	Two-level alarm(H-HH)
Gas alarm indication	1st : ALM1 lamp blinking or lighting(red)・buzzer 2nd : ALM2 lamp blinking or lighting(red)・buzzer
Gas alarm action [※]	Latched or Auto-recover, Lock-in
Gas alarm contact [※]	Each no-voltage contact 1a or 1b(contact output for each alarm)・ Non-exciting at normal(exciting at alarm) or exciting at normal (non-exciting at alarm)
Trouble alarm・Self diagnosis	System failure/Detecting circuit failure/Communication failure(digital transmission only)
Trouble alarm indication	FAULT lamp blinking(orange)/content display/buzzer
Trouble alarm action	Auto-recover
Trouble alarm contact [※]	No-voltage contact 1a or 1b・ Non-exciting at normal(exciting at alarm) or exciting at normal (non-exciting at alarm)
Contact capacity	AC125V・1A/DC30V・1A(resistive load)
Transmission scheme [※]	Analog transmission/Digital transmission 【Option】
Specification of transmission	Analog transmission : DC4~20mA(non-isolated・load resistance less than 300Ω)/Digital transmission : RS-485
Gas detector head signal	Direct signal from sensor
Cable between detector	CVV worth cable(1.25sq or 2.0sq)・4-core
Distance between detector	Less than 1km by CVV・2.0sq cable
Various functions	Alarm delay/Suppress/Zero tracking/Peak hold/Calibration history/ Alarm trend history/Event history
Power supply [※]	AC specification : AC100~240V±10%・50/60Hz or DC specification : DC24V±10%(DC21.6~26.4V) 【Option】
Power consumption	AC specification : MAX.15VA(detector head including, pump excluding) DC specification : MAX.8.5W(detector head including, pump excluding)
Utility	AC output for pump power supply(AC100~240V・MAX.15VA) DC output for pump power supply(DC24V・MAX.9W) 【Option】
Initial clear	Approx. 25sec
Operating temperature	-10~50°C(non-rapidly-vary)
Operating humidity	95%RH(non-condensing)
Structure [※]	Wall mounting type or rack mounting type
Outer dimension	Wall mounting type : Approx. 110(W) × 190(H) × 54(D)mm(projection excluding) Rack mounting type : Approx. 110(W) × 190(H) × 54(D)mm(projection excluding)
Weight	Wall mounting type : Approx. 0.58kg Rack mounting type : Approx. 0.65kg

※ Please specify your request when ordering.

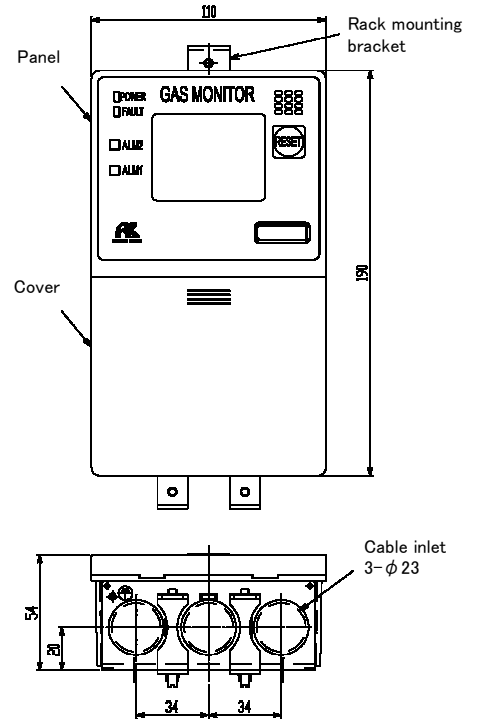
Outline Drawings

Self-latching/auto-reset operation specifications

Wall mounting type

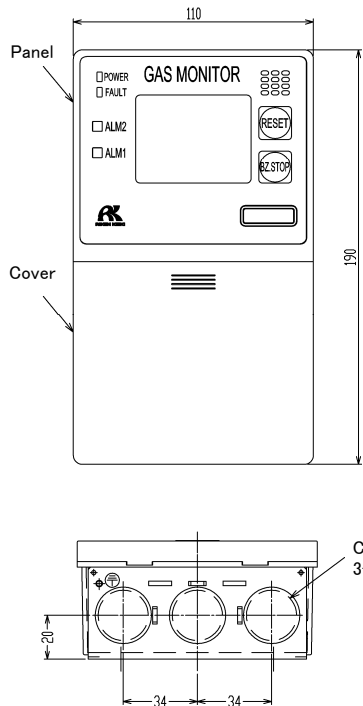


Rack mounting type



Lock-in operation specifications

Wall mounting type



Rack mounting type

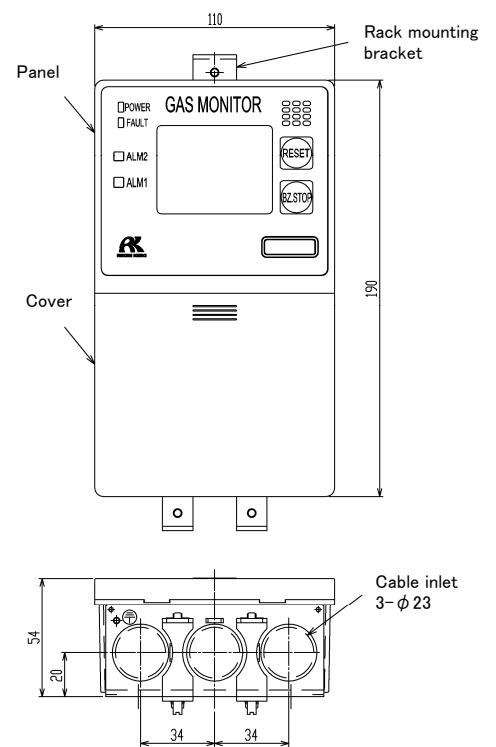
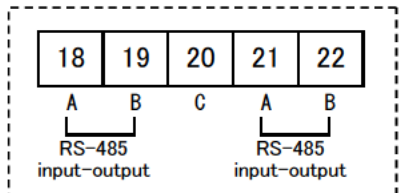
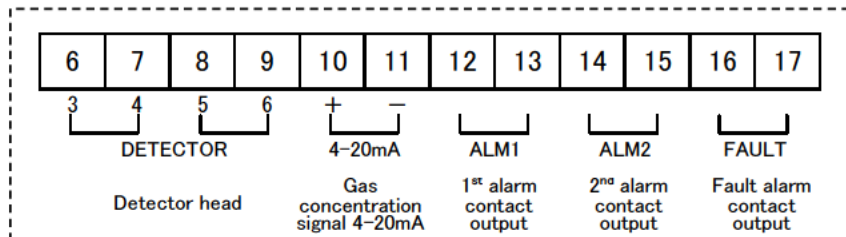
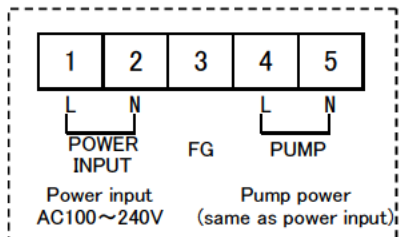


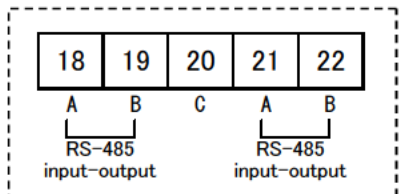
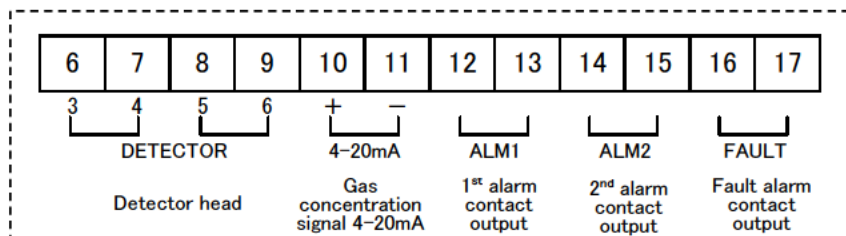
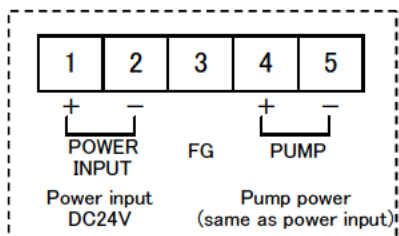
Figure of Terminal Plate

AC specification



- ※ Compatible bar terminal : 216 series(manufactured by WAGO), compatible wire : size 0.5-2.0mm²(stranded wire) or ϕ 0.8-2.0mm(solid wire), bare wire length 10-11mm
- ※ RS-485【option】

DC specification



- ※ Compatible bar terminal : 216 series(manufactured by WAGO), compatible wire : size 0.5-2.0mm²(stranded wire) or ϕ 0.8-2.0mm(solid wire), bare wire length 10-11mm
- ※ RS-485【option】

INDICATOR/ALARM UNIT GH-6001 SPECIFICATION

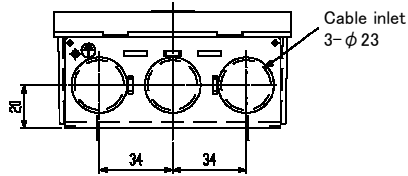
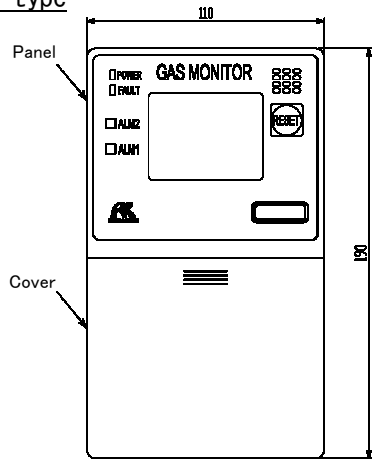
Detectable gas [※]	Combustible gas/Toxic gas
Applicable detector head	Semi-conductor method gas detector head
Gas concentration display	LCD(digital and bar-meter display<three colors:green, orange, red>>)
Power indication	POWER lamp lighting(green)
Gas alarm type	Two-level alarm(H-HH)
Gas alarm indication	1st : ALM1 lamp blinking or lighting(red) · buzzer 2nd : ALM2 lamp blinking or lighting(red) · buzzer
Gas alarm action [※]	Latched or Auto-recover, Lock-in
Gas alarm contact [※]	Each no-voltage contact 1a or 1b(contact output for each alarm) · Non-exciting at normal(exciting at alarm) or exciting at normal (non-exciting at alarm)
Trouble alarm · Self diagnosis	System failure/Detecting circuit failure/Communication failure(digital transmission only)
Trouble alarm indication	FAULT lamp blinking(orange)/content display/buzzer
Trouble alarm action	Auto-recover
Trouble alarm contact [※]	No-voltage contact 1a or 1b · Non-exciting at normal(exciting at alarm) or exciting at normal (non-exciting at alarm)
Contact capacity	AC125V · 1A/DC30V · 1A(resistive load)
Transmission scheme [※]	Analog transmission/Digital transmission 【Option】
Specification of transmission	Analog transmission : DC4~20mA (non-isolated · load resistance less than 300Ω)/Digital transmission : RS-485
Gas detector head signal	Direct signal from sensor
Cable between detector	CVVS worth shielded cable(1.25sq or 2.0sq) · 3-core
Distance between detector	Less than 1km by CVVS · 2.0sq cable
Various functions	Alarm delay/Suppress/Peak hold/Calibration history/ Alarm trend history/Event history
Power supply [※]	AC specification : AC100~240V±10% · 50/60Hz or DC specification : DC24V±10%(DC21.6~26.4V) 【Option】
Power consumption	AC specification : MAX. 11.5VA(detector head including, pump excluding) DC specification : MAX. 6W(detector head including, pump excluding)
Utility	AC output for pump power supply(AC100~240V · MAX. 15VA) DC output for pump power supply(DC24V · MAX. 9W) 【Option】
Initial clear	Approx. 25sec
Operating temperature	-10~50°C (non-rapidly-vary)
Operating humidity	95%RH (non-condensing)
Structure [※]	Wall mounting type or rack mounting type
Outer dimension	Wall mounting type : Approx. 110 (W) × 190 (H) × 54 (D) mm (projection excluding) Rack mounting type : Approx. 110 (W) × 190 (H) × 54 (D) mm (projection excluding)
Weight	Wall mounting type : Approx. 0.58kg Rack mounting type : Approx. 0.65kg

※ Please specify your request when ordering.

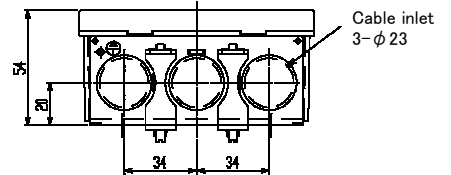
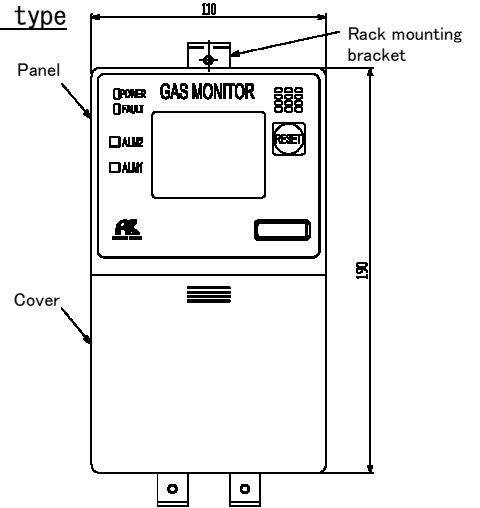
Outline Drawings

Self-latching/auto-reset operation specifications

Wall mounting type

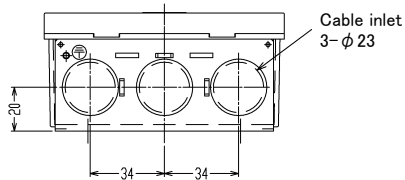
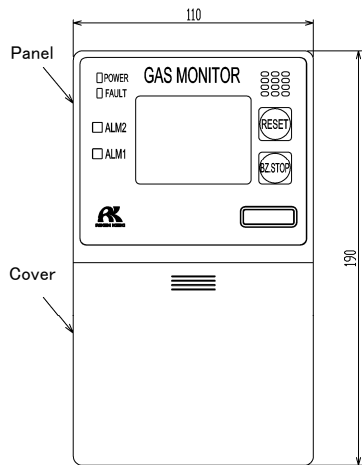


Rack mounting type



Lock-in operation specifications

Wall mounting type



Rack mounting type

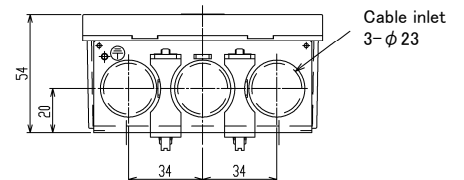
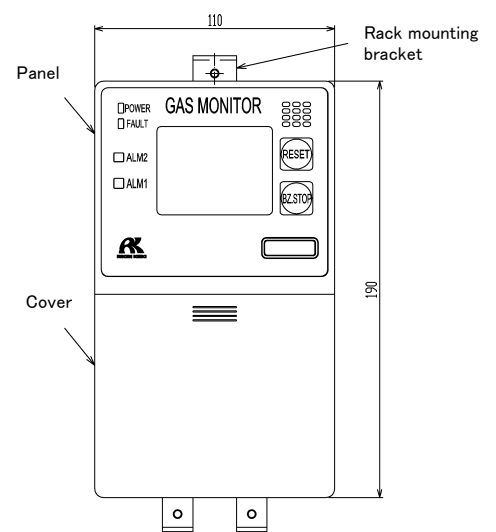
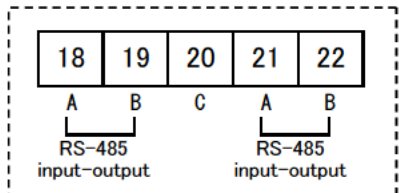
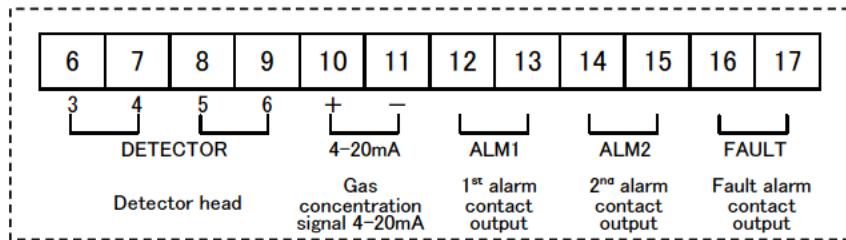
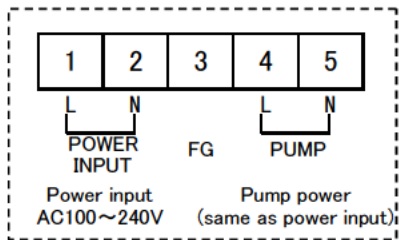


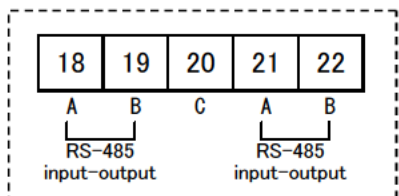
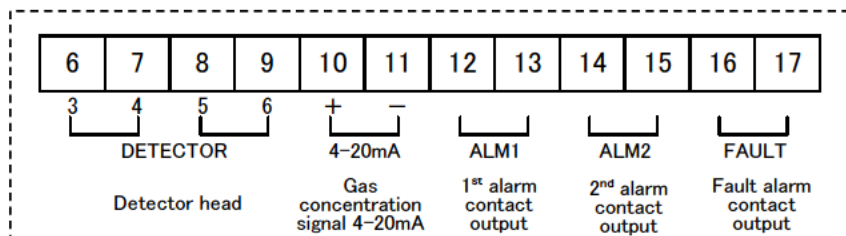
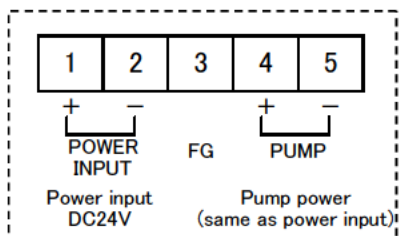
Figure of Terminal Plate

AC specification



- ※ Compatible bar terminal : 216 series(manufactured by WAGO), compatible wire : size 0.5-2.0mm²(stranded wire) or ϕ 0.8-2.0mm(solid wire), bare wire length 10-11mm
- ※ RS-485【option】

DC specification



- ※ Compatible bar terminal : 216 series(manufactured by WAGO), compatible wire : size 0.5-2.0mm²(stranded wire) or ϕ 0.8-2.0mm(solid wire), bare wire length 10-11mm
- ※ RS-485【option】

INDICATOR/ALARM UNIT EC-6002 SPECIFICATION

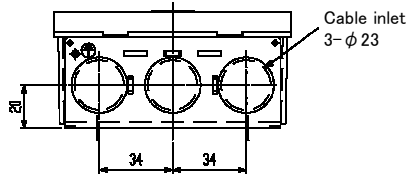
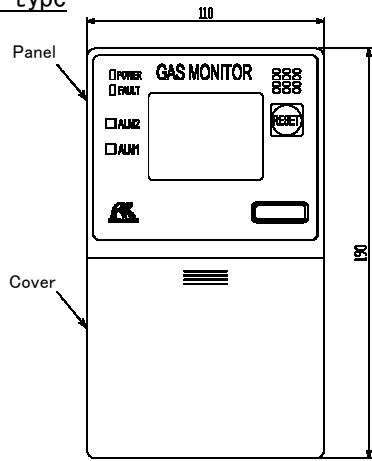
Detectable gas※	Toxic gas
Applicable detector head※	Electrochemical method gas detector head/Pyrolysis-particle method gas detector head
Gas concentration display	LCD(digital and bar-meter display<three colors:green, orange, red>)
Power indication	POWER lamp lighting(green)
Gas alarm type	Two-level alarm(H-HH)
Gas alarm indication	1st : ALM1 lamp blinking or lighting(red) ・ buzzer 2nd : ALM2 lamp blinking or lighting(red) ・ buzzer
Gas alarm action※	Latched or Auto-recover, Lock-in
Gas alarm contact※	Each no-voltage contact 1a or 1b(contact output for each alarm) ・ Non-exciting at normal(exciting at alarm) or exciting at normal (non-exciting at alarm)
Trouble alarm・Self diagnosis	System failure/Detecting circuit failure/Flow failure of gas detector head/Communication failure(digital transmission only)
Trouble alarm indication	FAULT lamp blinking(orange)/content display/buzzer
Trouble alarm action	Auto-recover
Trouble alarm contact※	No-voltage contact 1a or 1b ・ Non-exciting at normal(exciting at alarm) or exciting at normal (non-exciting at alarm)
Contact capacity	AC125V ・ 1A/DC30V ・ 1A(resistive load)
Transmission scheme※	Analog transmission/Digital transmission 【Option】
Specification of transmission	Analog transmission : DC4~20mA (non-isolated ・ load resistance less than 300Ω)/Digital transmission : RS-485
Gas detector head signal	Current signal (DC4~20mA)
Cable between detector	CVVS worth shielded cable(1.25sq or 2.0sq) ・ 2-core
Distance between detector	Less than 2km by CVVS ・ 2.0sq cable
Various functions	Alarm delay/Suppress/Peak hold/Calibration history/ Alarm trend history/Event history
Power supply※	AC specification : AC100~240V±10% ・ 50/60Hz or DC specification : DC24V±10%(DC21.6~26.4V) 【Option】
Power consumption	AC specification : MAX. 7.5VA(detector head including, pump excluding) DC specification : MAX. 3.5W(detector head including, pump excluding)
Utility	AC output for pump power supply(AC100~240V ・ MAX. 15VA) DC output for pump power supply(DC24V ・ MAX. 9W) 【Option】
Initial clear	Approx. 25sec
Operating temperature	-10~50°C (non-rapidly-vary)
Operating humidity	95%RH (non-condensing)
Structure※	Wall mounting type or rack mounting type
Outer dimension	Wall mounting type : Approx. 110 (W) × 190 (H) × 54 (D) mm (projection excluding) Rack mounting type : Approx. 110 (W) × 190 (H) × 54 (D) mm (projection excluding)
Weight	Wall mounting type : Approx. 0.58kg Rack mounting type : Approx. 0.65kg

※ Please specify your request when ordering.

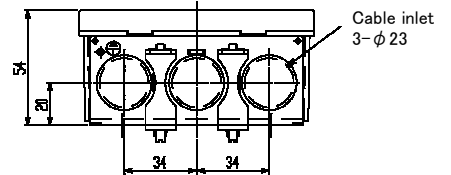
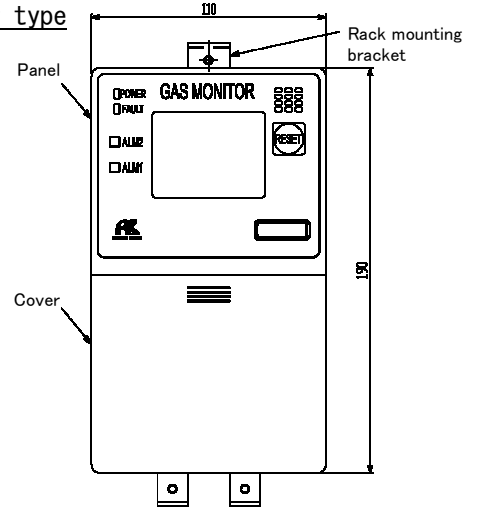
Outline Drawings

Self-latching/auto-reset operation specifications

Wall mounting type

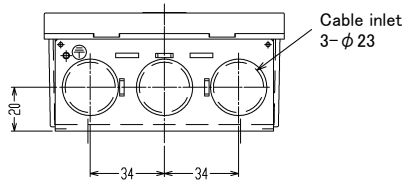
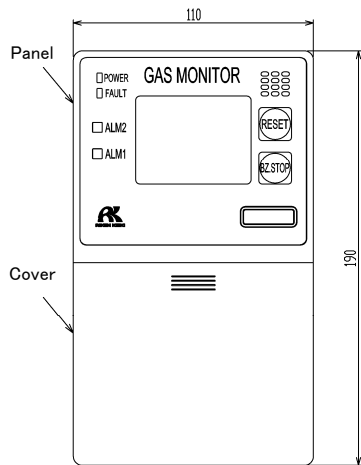


Rack mounting type



Lock-in operation specifications

Wall mounting type



Rack mounting type

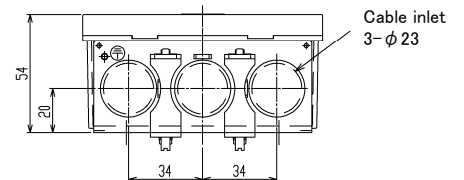
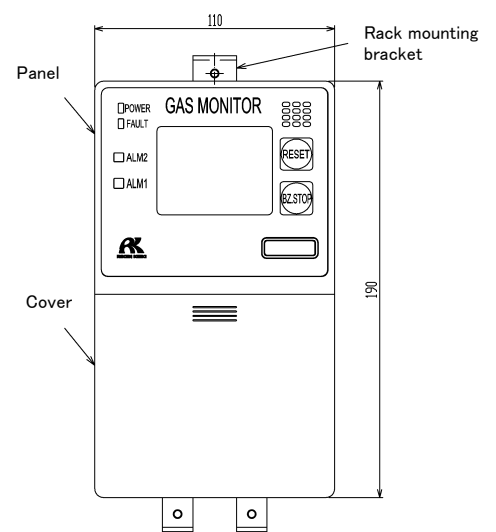
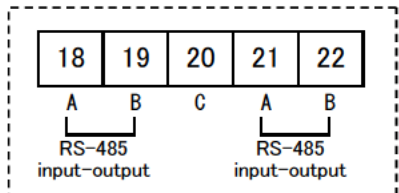
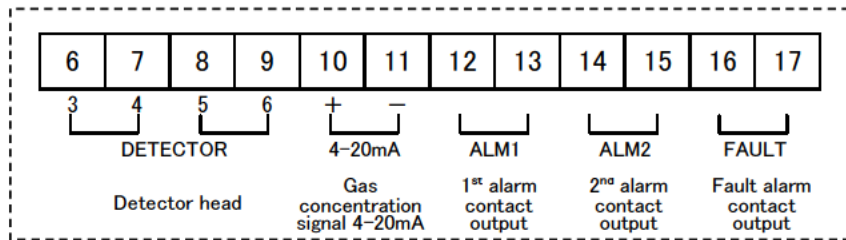
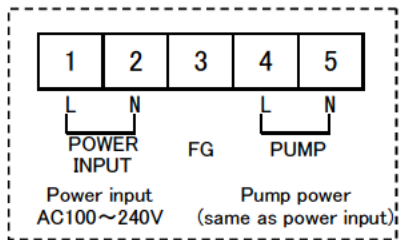


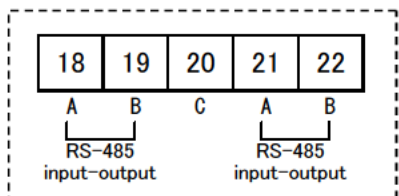
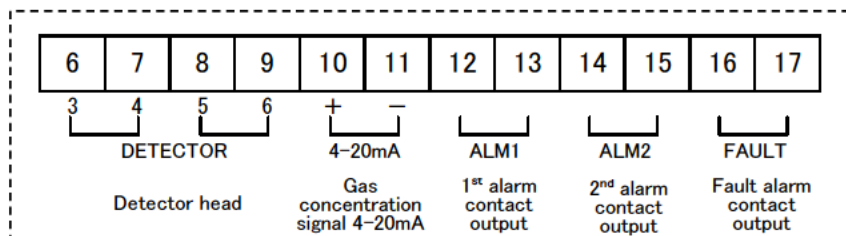
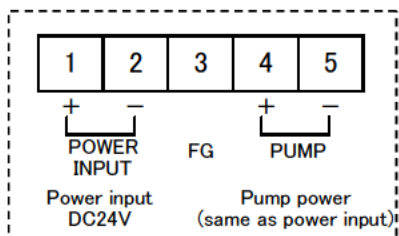
Figure of Terminal Plate

AC specification



- ※ Compatible bar terminal : 216 series(manufactured by WAGO), compatible wire : size 0.5-2.0mm²(stranded wire) or ϕ 0.8-2.0mm(solid wire), bare wire length 10-11mm
- ※ RS-485【option】

DC specification



- ※ Compatible bar terminal : 216 series(manufactured by WAGO), compatible wire : size 0.5-2.0mm²(stranded wire) or ϕ 0.8-2.0mm(solid wire), bare wire length 10-11mm
- ※ RS-485【option】

INDICATOR/ALARM UNIT OX-6001 SPECIFICATION

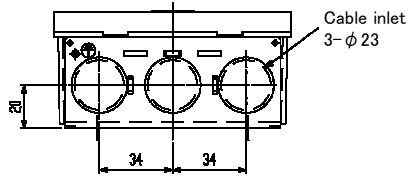
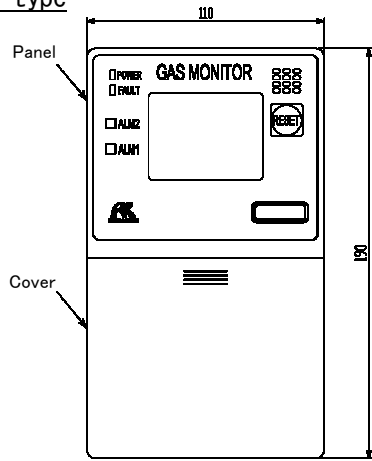
Detectable gas	Oxygen
Applicable detector head	Galvanic cell method gas detector head
Gas concentration display	LCD(digital and bar-meter display<three colors:green, orange, red>>)
Power indication	POWER lamp lighting(green)
Gas alarm type [※]	Two-level alarm(H-HH or L-H, L-LL)
Gas alarm indication	1st : ALM1 lamp blinking or lighting(red)・buzzer 2nd : ALM2 lamp blinking or lighting(red)・buzzer
Gas alarm action [※]	Latched or Auto-recover, Lock-in
Gas alarm contact [※]	Each no-voltage contact 1a or 1b(contact output for each alarm)・ Non-exciting at normal(exciting at alarm) or exciting at normal (non-exciting at alarm)
Trouble alarm・Self diagnosis	System failure/Detecting circuit failure/Communication failure(digital transmission only)
Trouble alarm indication	FAULT lamp blinking(orange)/content display/buzzer
Trouble alarm action	Auto-recover
Trouble alarm contact [※]	No-voltage contact 1a or 1b・ Non-exciting at normal(exciting at alarm) or exciting at normal (non-exciting at alarm)
Contact capacity	AC125V・1A/DC30V・1A(resistive load)
Transmission scheme [※]	Analog transmission/Digital transmission 【Option】
Specification of transmission	Analog transmission : DC4~20mA(non-isolated・load resistance less than 300Ω)/Digital transmission : RS-485
Gas detector head signal	Direct signal from sensor
Cable between detector	CVVS worth shielded cable(1.25sq or 2.0sq)・2-core
Distance between detector	Less than 600m by CVVS・2.0sq cable
Various functions	Alarm delay/Suppress/Peak hold/Calibration history/Alarm trend history/Event history
Power supply [※]	AC specification : AC100~240V±10%・50/60Hz or DC specification : DC24V±10%(DC21.6~26.4V) 【Option】
Power consumption	AC specification : MAX. 6.5VA(detector head including, pump excluding) DC specification : MAX. 3W(detector head including, pump excluding)
Utility	AC output for pump power supply(AC100~240V・MAX. 15VA) DC output for pump power supply(DC24V・MAX. 9W) 【Option】
Initial clear	Approx. 25sec
Operating temperature	-10~50°C(non-rapidly-vary)
Operating humidity	95%RH(non-condensing)
Structure [※]	Wall mounting type or rack mounting type
Outer dimension	Wall mounting type : Approx. 110(W) × 190(H) × 54(D)mm(projection excluding) Rack mounting type : Approx. 110(W) × 190(H) × 54(D)mm(projection excluding)
Weight	Wall mounting type : Approx. 0.58kg Rack mounting type : Approx. 0.65kg

※ Please specify your request when ordering.

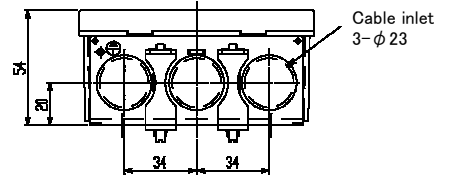
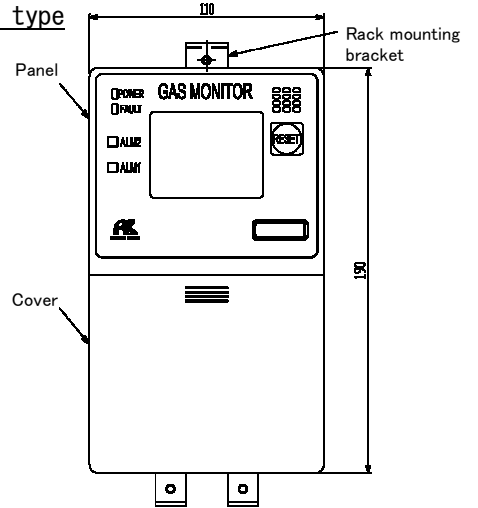
Outline Drawings

Self-latching/auto-reset operation specifications

Wall mounting type

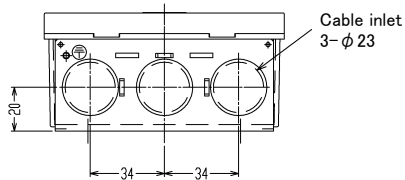
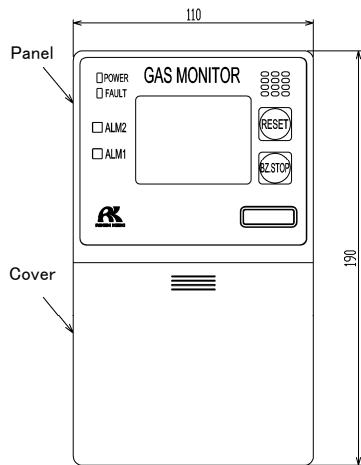


Rack mounting type



Lock-in operation specifications

Wall mounting type



Rack mounting type

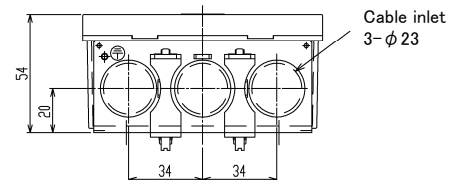
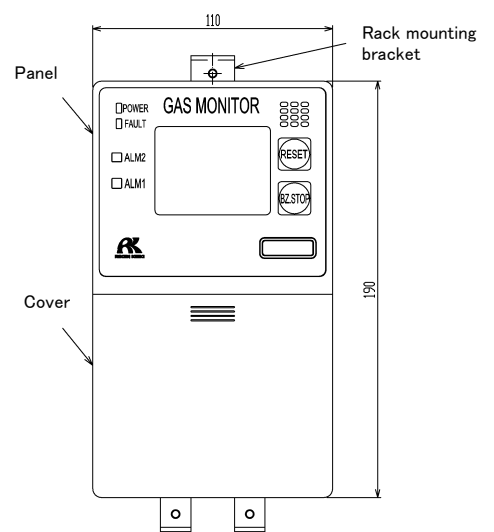
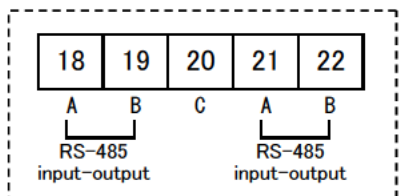
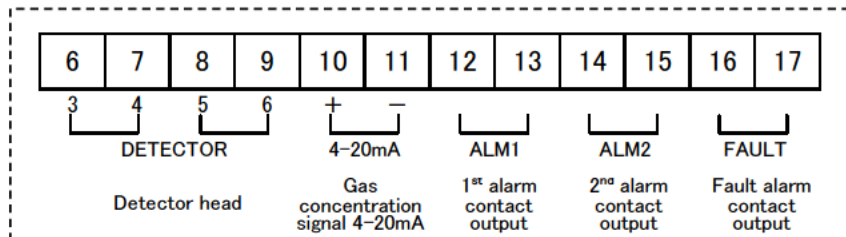
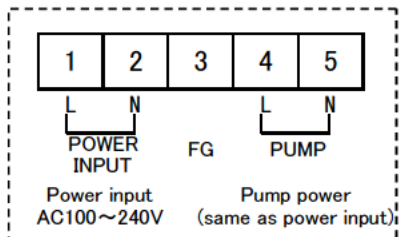


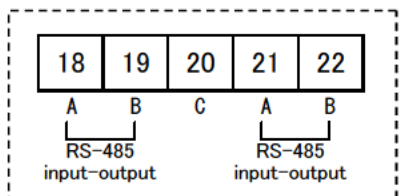
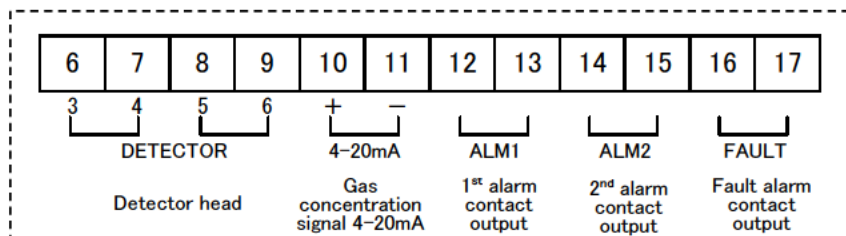
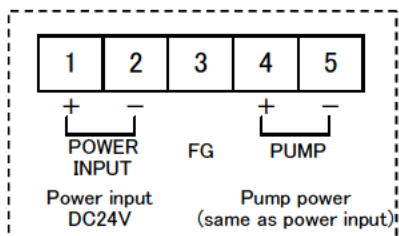
Figure of Terminal Plate

AC specification



- ※ Compatible bar terminal : 216 series(manufactured by WAGO), compatible wire : size 0.5-2.0mm²(stranded wire) or ϕ 0.8-2.0mm(solid wire), bare wire length 10-11mm
- ※ RS-485【option】

DC specification



- ※ Compatible bar terminal : 216 series(manufactured by WAGO), compatible wire : size 0.5-2.0mm²(stranded wire) or ϕ 0.8-2.0mm(solid wire), bare wire length 10-11mm
- ※ RS-485【option】

INDICATOR/ALARM UNIT OX-6002 SPECIFICATION

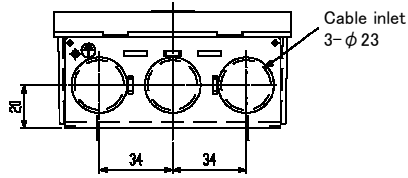
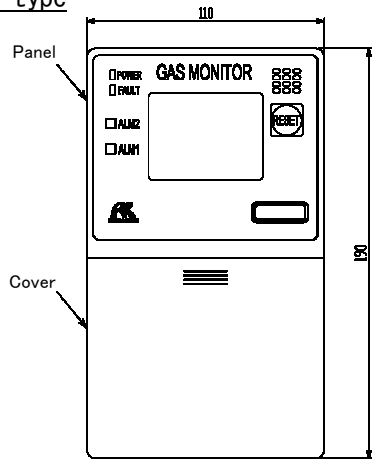
Detectable gas	Oxygen
Applicable detector head	Galvanic cell method gas detector head
Gas concentration display	LCD(digital and bar-meter display<three colors:green, orange, red>>)
Power indication	POWER lamp lighting(green)
Gas alarm type [※]	Two-level alarm(H-HH or L-H, L-LL)
Gas alarm indication	1st : ALM1 lamp blinking or lighting(red) ・ buzzer 2nd : ALM2 lamp blinking or lighting(red) ・ buzzer
Gas alarm action [※]	Latched or Auto-recover, Lock-in
Gas alarm contact [※]	Each no-voltage contact 1a or 1b(contact output for each alarm) ・ Non-exciting at normal(exciting at alarm) or exciting at normal (non-exciting at alarm)
Trouble alarm・Self diagnosis	System failure/Detecting circuit failure/Flow failure of gas detector head/Communication failure(digital transmission only)
Trouble alarm indication	FAULT lamp blinking(orange)/content display/buzzer
Trouble alarm action	Auto-recover
Trouble alarm contact [※]	No-voltage contact 1a or 1b ・ Non-exciting at normal(exciting at alarm) or exciting at normal (non-exciting at alarm)
Contact capacity	AC125V・1A/DC30V・1A(resistive load)
Transmission scheme [※]	Analog transmission/Digital transmission 【Option】
Specification of transmission	Analog transmission : DC4~20mA (non-isolated ・ load resistance less than 300Ω)/Digital transmission : RS-485
Gas detector head signal	Current signal (DC4~20mA)
Cable between detector	CVVS worth shielded cable(1.25sq or 2.0sq) ・ 2-core
Distance between detector	Less than 2km by CVVS ・ 2.0sq cable
Various functions	Alarm delay/Suppress/Peak hold/Calibration history/Alarm trend history/Event history
Power supply [※]	AC specification : AC100~240V±10% ・ 50/60Hz or DC specification : DC24V±10%(DC21.6~26.4V) 【Option】
Power consumption	AC specification : MAX. 7.5VA(detector head including, pump excluding) DC specification : MAX. 3.5W(detector head including, pump excluding)
Utility	AC output for pump power supply(AC100~240V ・ MAX. 15VA) DC output for pump power supply(DC24V ・ MAX. 9W) 【Option】
Initial clear	Approx. 25sec
Operating temperature	-10~50°C (non-rapidly-vary)
Operating humidity	95%RH (non-condensing)
Structure [※]	Wall mounting type or rack mounting type
Outer dimension	Wall mounting type : Approx. 110 (W) × 190 (H) × 54 (D) mm (projection excluding) Rack mounting type : Approx. 110 (W) × 190 (H) × 54 (D) mm (projection excluding)
Weight	Wall mounting type : Approx. 0.58kg Rack mounting type : Approx. 0.65kg

※ Please specify your request when ordering.

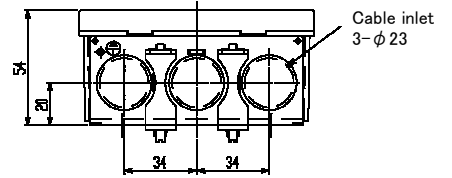
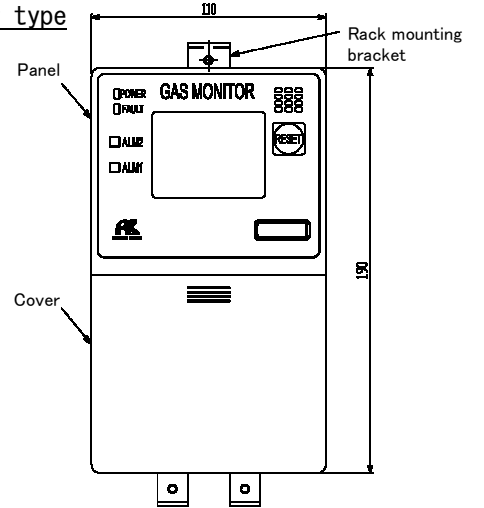
Outline Drawings

Self-latching/auto-reset operation specifications

Wall mounting type

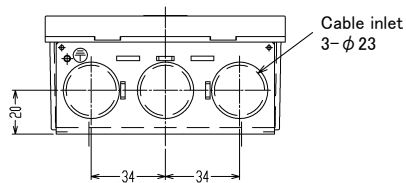
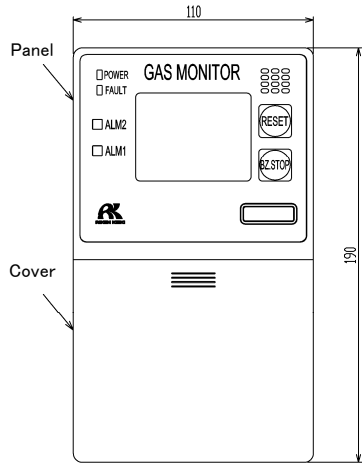


Rack mounting type



Lock-in operation specifications

Wall mounting type



Rack mounting type

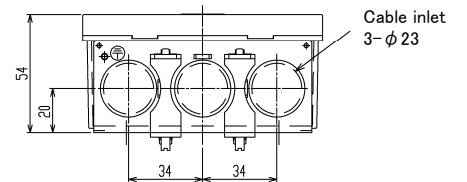
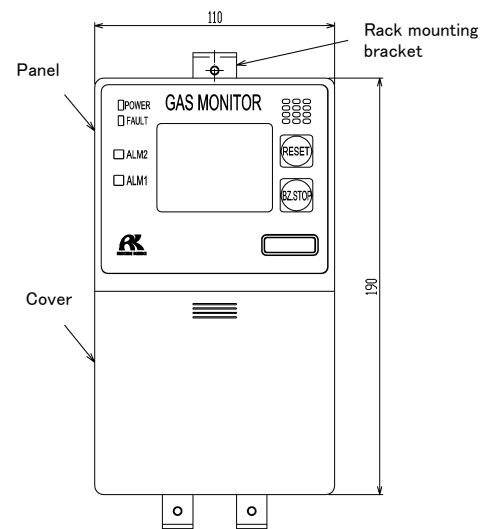
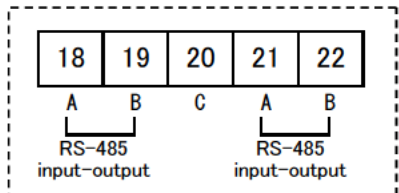
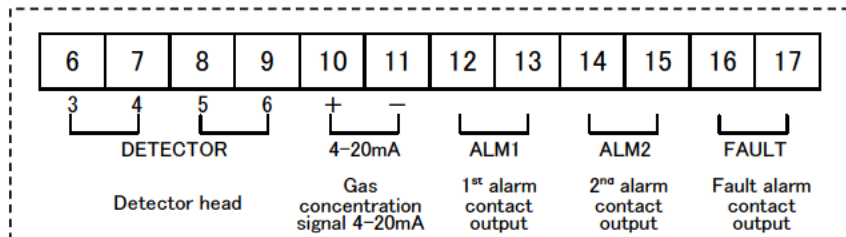
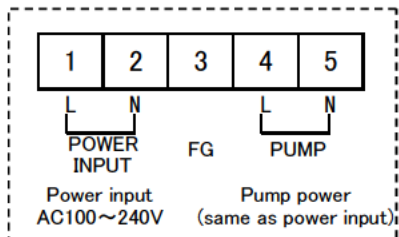


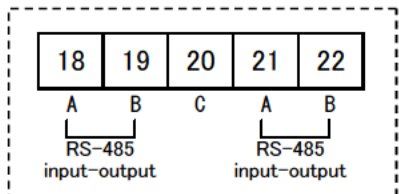
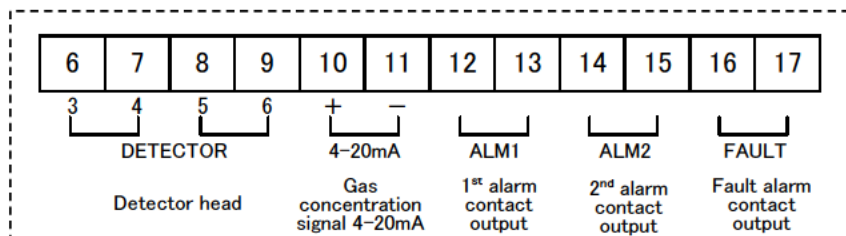
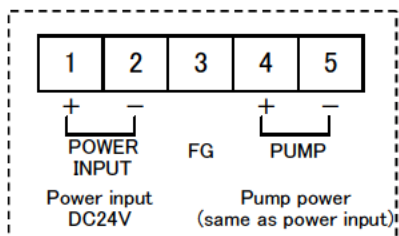
Figure of Terminal Plate

AC specification



- ※ Compatible bar terminal : 216 series(manufactured by WAGO), compatible wire : size 0.5-2.0mm²(stranded wire) or ϕ 0.8-2.0mm(solid wire), bare wire length 10-11mm
- ※ RS-485【option】

DC specification



- ※ Compatible bar terminal : 216 series(manufactured by WAGO), compatible wire : size 0.5-2.0mm²(stranded wire) or ϕ 0.8-2.0mm(solid wire), bare wire length 10-11mm
- ※ RS-485【option】

INDICATOR/ALARM UNIT

RM-6002 SPECIFICATION

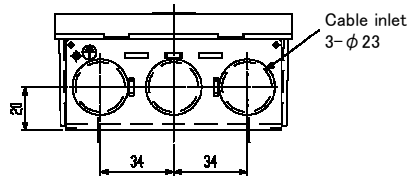
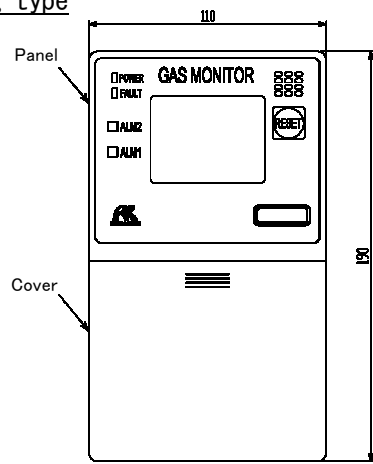
Detectable gas [※]	Depend on the connected detector head
Applicable detector head [※]	General measurement signal output detector head
Gas concentration display	LCD(digital and bar-meter display<three colors:green, orange, red>)
Power indication	POWER lamp lighting(green)
Gas alarm type [※]	Two-level alarm(H-HH or L-H, L-LL)
Gas alarm indication	1st : ALM1 lamp blinking or lighting(red) · buzzer 2nd : ALM2 lamp blinking or lighting(red) · buzzer
Gas alarm action [※]	Latched or Auto-recover, Lock-in
Gas alarm contact [※]	Each no-voltage contact 1a or 1b(contact output for each alarm) · Non-exciting at normal(exciting at alarm) or exciting at normal (non-exciting at alarm)
Trouble alarm · Self diagnosis	System failure/Detecting circuit failure/Flow failure of gas detector head/Communication failure(digital transmission only)
Trouble alarm indication	FAULT lamp blinking(orange)/content display/buzzer
Trouble alarm action	Auto-recover
Trouble alarm contact [※]	No-voltage contact 1a or 1b · Non-exciting at normal(exciting at alarm) or exciting at normal (non-exciting at alarm)
Contact capacity	AC125V · 1A/DC30V · 1A(resistive load)
Transmission scheme [※]	Analog transmission/Digital transmission 【Option】
Specification of transmission	Analog transmission : DC4~20mA(non-isolated · load resistance less than 300Ω)/Digital transmission : RS-485
Gas detector head signal	Current signal(DC4~20mA)
Cable between detector	CVVS worth shielded cable(1.25sq or 2.0sq) · 2-core
Distance between detector [※]	Depend on the connected detector head
Various functions	Alarm delay/Peak hold/Alarm trend history/Event history
Power supply [※]	AC specification : AC100~240V±10% · 50/60Hz or DC specification : DC24V±10%(DC21.6~26.4V) 【Option】
Power consumption	AC specification : MAX. 7.5VA(detector head including, pump excluding) DC specification : MAX. 3.5W(detector head including, pump excluding)
Utility	AC output for pump power supply(AC100~240V · MAX. 15VA) DC output for pump power supply(DC24V · MAX. 9W) 【Option】
Initial clear	Approx. 25sec
Operating temperature	-10~50°C(non-rapidly-vary)
Operating humidity	95%RH(non-condensing)
Structure [※]	Wall mounting type or rack mounting type
Outer dimension	Wall mounting type : Approx. 110(W) × 190(H) × 54(D)mm (projection excluding) Rack mounting type : Approx. 110(W) × 190(H) × 54(D)mm (projection excluding)
Weight	Wall mounting type : Approx. 0.58kg Rack mounting type : Approx. 0.65kg

※ Please specify your request when ordering.

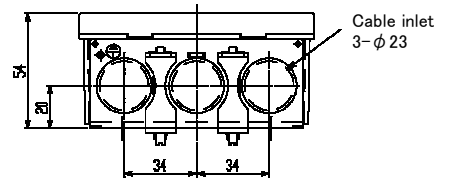
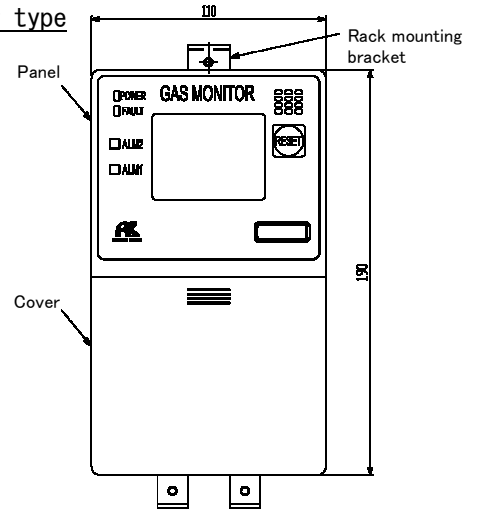
Outline Drawings

Self-latching/auto-reset operation specifications

Wall mounting type

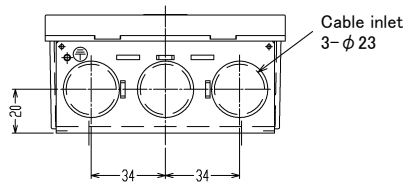
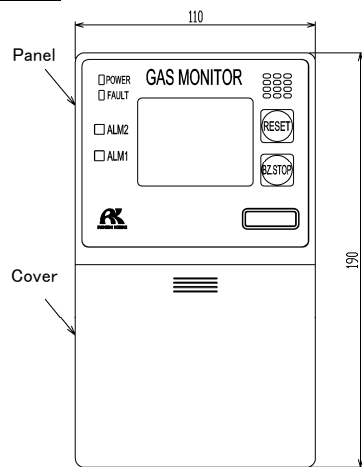


Rack mounting type



Lock-in operation specifications

Wall mounting type



Rack mounting type

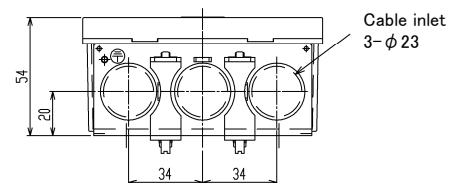
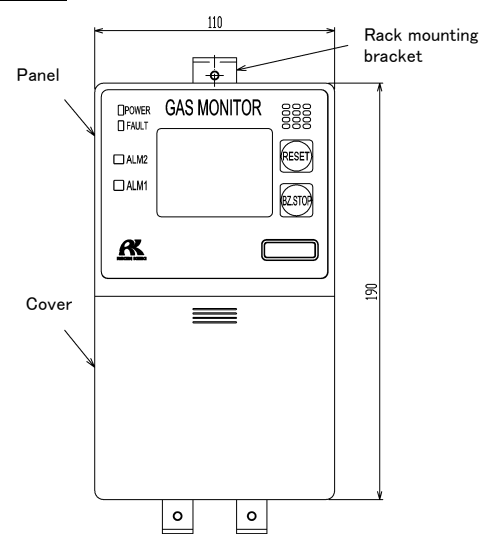
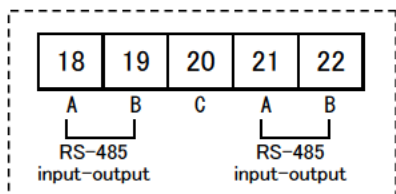
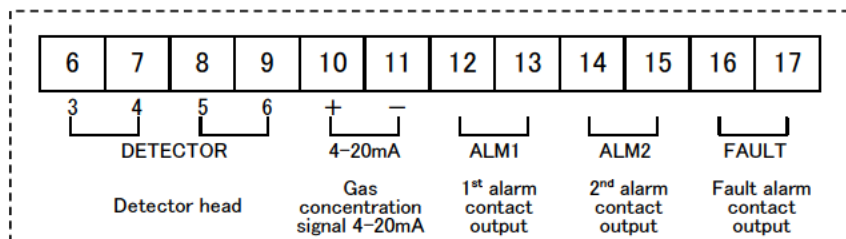
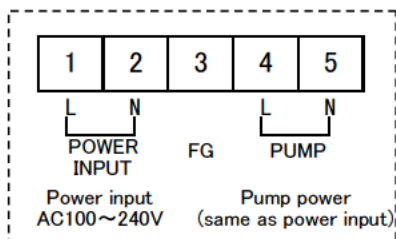


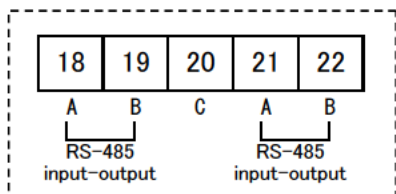
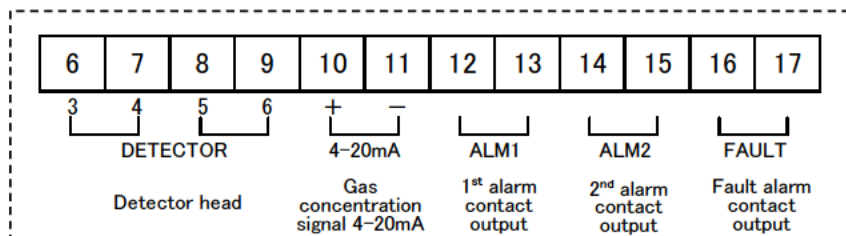
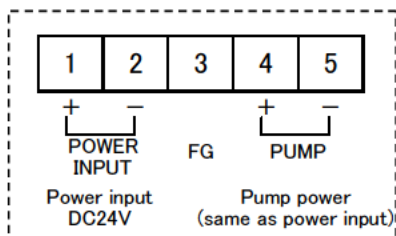
Figure of Terminal Plate

AC specification



- ※ Compatible bar terminal : 216 series(manufactured by WAGO), compatible wire : size 0.5-2.0mm²(stranded wire) or ϕ 0.8-2.0mm(solid wire), bare wire length 10-11mm
- ※ RS-485【option】

DC specification



- ※ Compatible bar terminal : 216 series(manufactured by WAGO), compatible wire : size 0.5-2.0mm²(stranded wire) or ϕ 0.8-2.0mm(solid wire), bare wire length 10-11mm
- ※ RS-485【option】

INDICATOR/ALARM UNIT

RM-6003 SPECIFICATION

Detectable gas ^{※1}	Depend on the connected detector head
Applicable detector head ^{※1}	Various gas detector heads
Gas concentration display	LCD(digital and bar-meter display<three colors:green, orange, red>)
Power indication	POWER lamp lighting(green)
Gas alarm type ^{※1}	Two-level alarm(H-HH or L-H or L-LL)
Gas alarm indication ^{※1}	1st : ALM1 lamp blinking or lighting(red)・Buzzer 2nd : ALM2 lamp blinking or lighting(red)・Buzzer
Gas alarm action ^{※1}	Latched or Auto-recover, Lock-in
Gas alarm contact ^{※1}	Each no-voltage contact 1a or 1b(contact output for each alarm)・ Non-exciting at normal(exciting at alarm) or exciting at normal(non-exciting at alarm)
Trouble alarm・Self diagnosis	System failure/Detecting circuit failure/Flow failure of gas detector head/Communication failure(digital transmission only)
Trouble alarm indication	FAULT lamp blinking(yellow)/content display/Buzzer
Trouble alarm action	Auto-recover
Trouble alarm contact ^{※1}	No-voltage contact 1a or 1b・Non-exciting at normal (exciting at alarm) or exciting at normal (non-exciting at alarm)
Contact capacity	AC125V・1A/DC30V・1A(resistive load)
Transmission scheme ^{※1}	Analog transmission/Digital transmission 【Option】
Specification of Transmission	Analog transmission : DC4~20mA (non-isolated・load resistance less than 300Ω) Digital transmission : RS-485
Gas detector head signal	Current signal (DC4~20mA)
Cable between detector	CVVS worth shielded cable (1. 25sq or 2. 0sq)・3-core (power・signal・common)
Distance between detector ^{※1}	Depend on the connected detector head
Various functions	Alarm delay/Peak hold/Alarm trend history/Event history
Power supply ^{※1}	AC specification : AC100~240V±10%・50/60Hz or DC specification : DC24V±10%(DC21. 6~26. 4V) 【Option】
Power consumption ^{※2}	AC specification : MAX. 7. 5VA DC specification : MAX. 3. 5W
Utility	AC output for pump power supply (AC100~240V・MAX. 15VA) DC output for pump power supply (DC24V・MAX. 9W) 【Option】
Initial clear	Approx. 25sec
Operating temperature	-10~50°C (non-rapidly-vary)
Operating humidity	Less than 95%RH (non-condensing)
Structure ^{※1}	Wall mounting type or Panel mounting type
Outer dimension	Wall mounting type : Approx. 110 (W) × 190 (H) × 54 (D)mm (projection excluding) Panel mounting type : Approx. 110 (W) × 190 (H) × 54 (D)mm (projection excluding)
Weight	Wall mounting type : Approx. 0. 58kg Panel mounting type : Approx. 0. 65kg

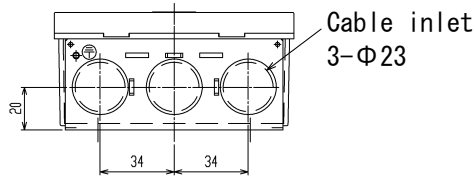
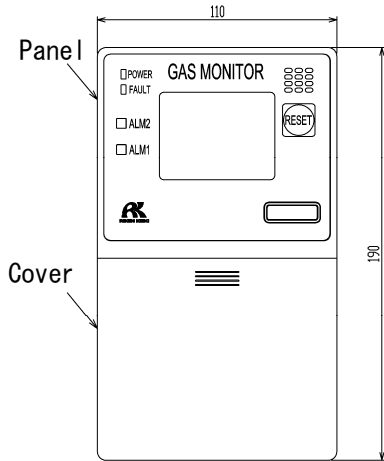
※1 Please specify your request when ordering.

※2 The power consumption value does not include that of the connected detector head. Add to this value.

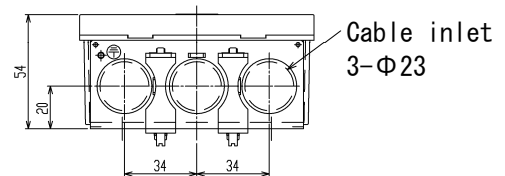
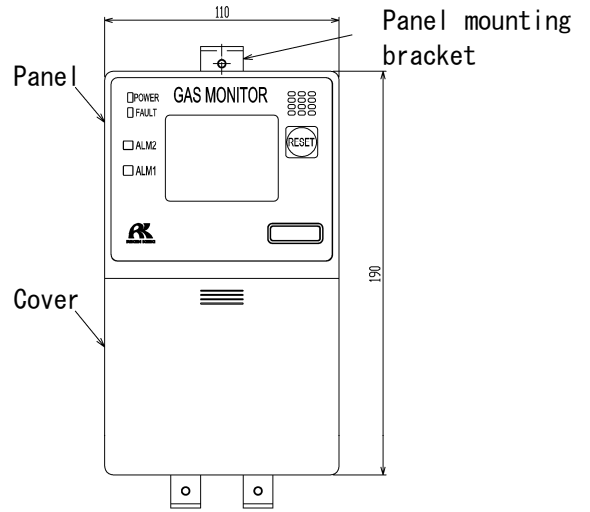
Outline Drawings

Self-latching/auto-reset operation specifications

Wall mounting type

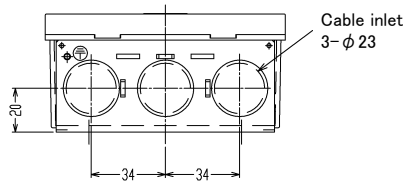
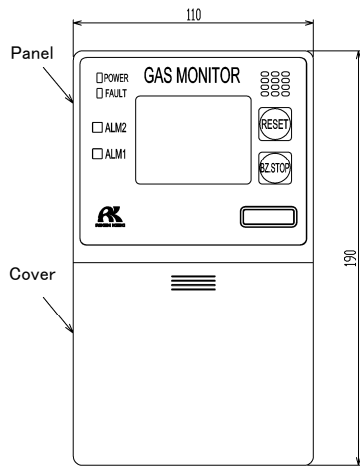


Panel mounting type



Lock-in operation specifications

Wall mounting type



Rack mounting type

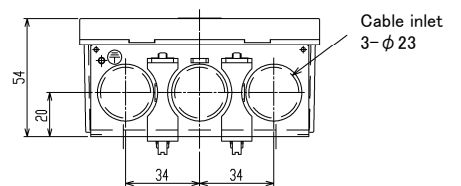
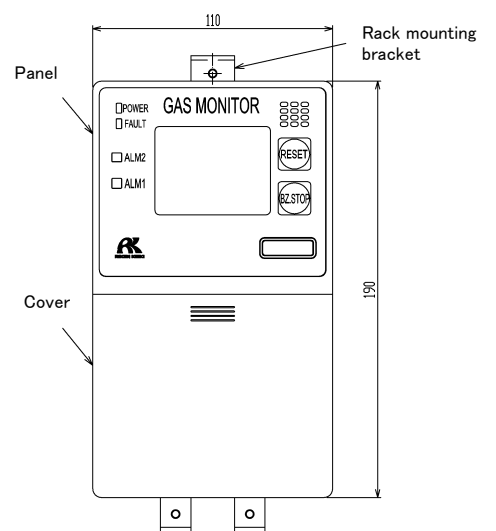
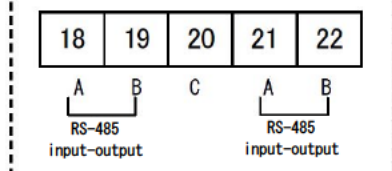
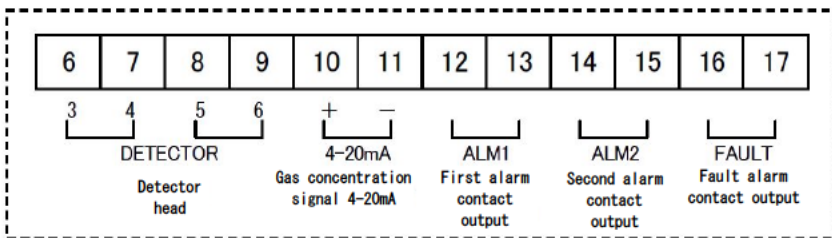
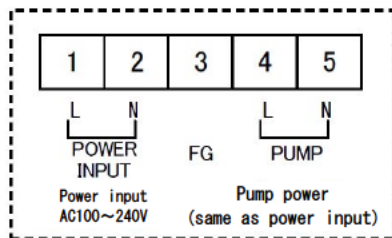


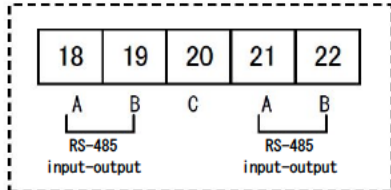
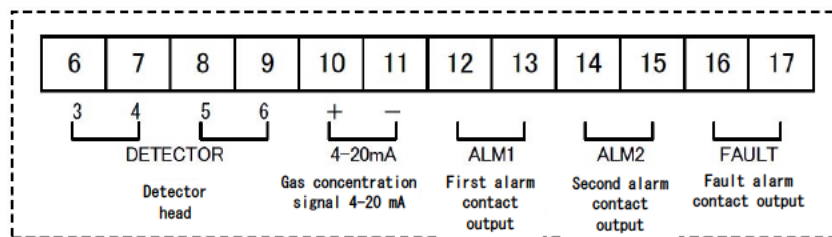
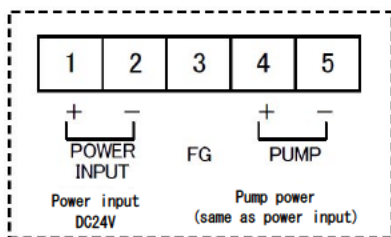
Figure of Terminal Plate

AC specification



- * Compatible bar terminal: 216 Series (manufactured by WAGO), compatible wire: Size 0.5~2.0 mm² (stranded wire) or Φ0.8~2.0 mm (solid wire), bare wire length 10~11 mm
- * RS-485 【option】

DC specification



- * Compatible bar terminal: 216 Series (manufactured by WAGO), compatible wire: Size 0.5~2.0 mm² (stranded wire) or Φ0.8~2.0 mm (solid wire), bare wire length 10~11 mm
- * RS-485 【option】

INDICATOR/ALARM UNIT NC-6001 SPECIFICATION

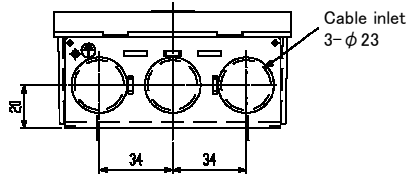
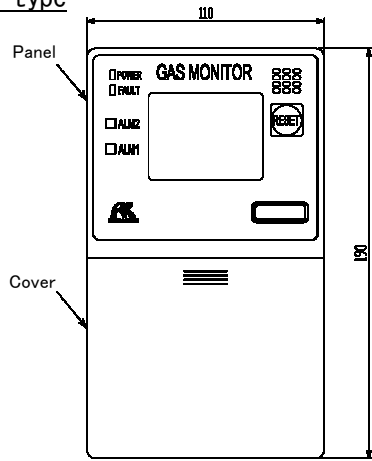
Detectable gas [※]	Combustible gas
Applicable detector head	New ceramic method gas detector head
Gas concentration display	LCD(digital and bar-meter display<three colors:green, orange, red>>)
Power indication	POWER lamp lighting(green)
Gas alarm type	Two-level alarm(H-HH)
Gas alarm indication	1st : ALM1 lamp blinking or lighting(red) ・ buzzer 2nd : ALM2 lamp blinking or lighting(red) ・ buzzer
Gas alarm action [※]	Latched or Auto-recover, Lock-in
Gas alarm contact [※]	Each no-voltage contact 1a or 1b(contact output for each alarm) ・ Non-exciting at normal(exciting at alarm) or exciting at normal (non-exciting at alarm)
Trouble alarm ・ Self diagnosis	System failure/Detecting circuit failure/Communication failure(digital transmission only)
Trouble alarm indication	FAULT lamp blinking(orange)/content display/buzzer
Trouble alarm action	Auto-recover
Trouble alarm contact [※]	No-voltage contact 1a or 1b ・ Non-exciting at normal(exciting at alarm) or exciting at normal (non-exciting at alarm)
Contact capacity	AC125V ・ 1A/DC30V ・ 1A(resistive load)
Transmission scheme [※]	Analog transmission/Digital transmission 【Option】
Specification of transmission	Analog transmission : DC4~20mA (non-isolated ・ load resistance less than 300Ω)/Digital transmission : RS-485
Gas detector head signal	Direct signal from sensor
Cable between detector	CVV worth cable(1.25sq or 2.0sq) ・ 4-core
Distance between detector	Less than 1km by CVV ・ 2.0sq cable
Various functions	Alarm delay/Suppress/Zero tracking/Peak hold/Calibration history/Alarm trend history/Event history
Power supply [※]	AC specification : AC100~240V±10% ・ 50/60Hz or DC specification : DC24V±10%(DC21.6~26.4V) 【Option】
Power consumption	AC specification : MAX.15VA(detector head including, pump excluding) DC specification : MAX.8.5W(detector head including, pump excluding)
Utility	AC output for pump power supply(AC100~240V ・ MAX.15VA) DC output for pump power supply(DC24V ・ MAX.9W) 【Option】
Initial clear	Approx. 25sec
Operating temperature	-10~50°C (non-rapidly-vary)
Operating humidity	95%RH (non-condensing)
Structure [※]	Wall mounting type or rack mounting type
Outer dimension	Wall mounting type : Approx. 110 (W) × 190 (H) × 54 (D) mm (projection excluding) Rack mounting type : Approx. 110 (W) × 190 (H) × 54 (D) mm (projection excluding)
Weight	Wall mounting type : Approx. 0.58kg Rack mounting type : Approx. 0.65kg

※ Please specify your request when ordering.

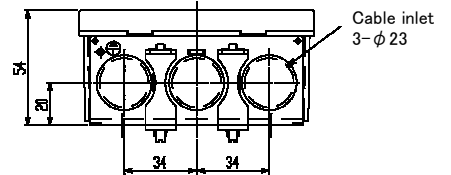
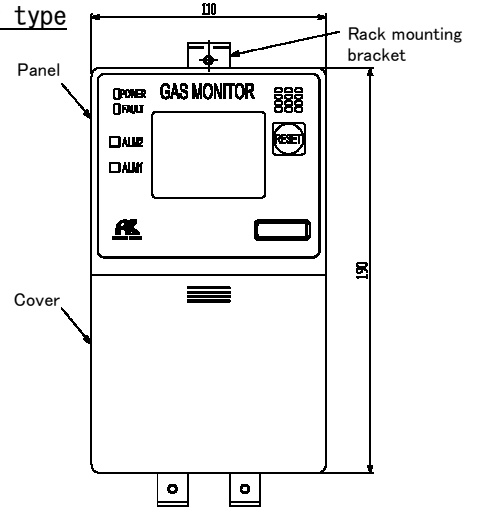
Outline Drawings

Self-latching/auto-reset operation specifications

Wall mounting type

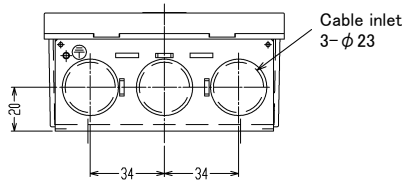
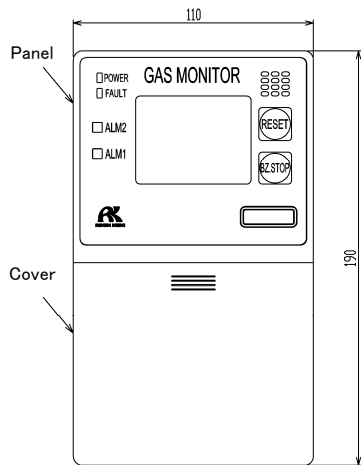


Rack mounting type



Lock-in operation specifications

Wall mounting type



Rack mounting type

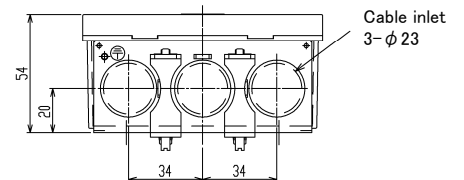
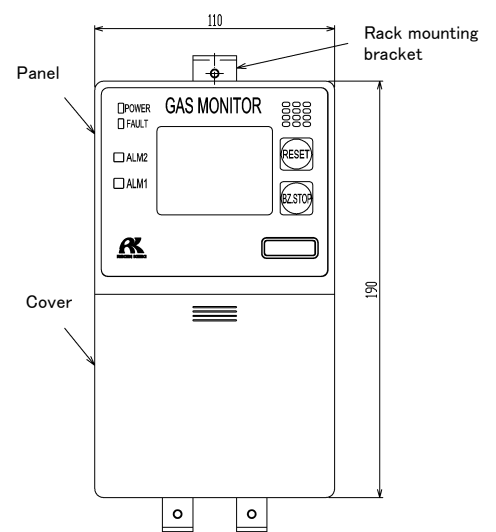
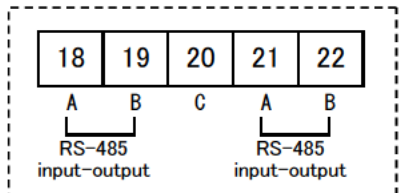
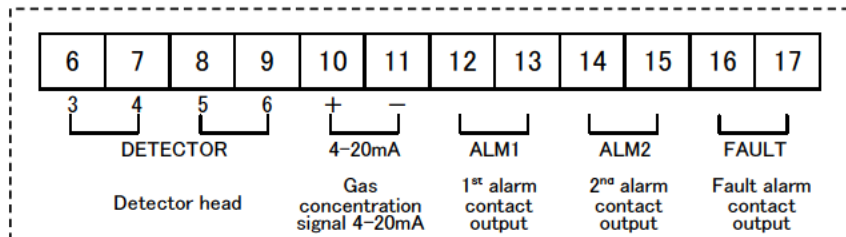
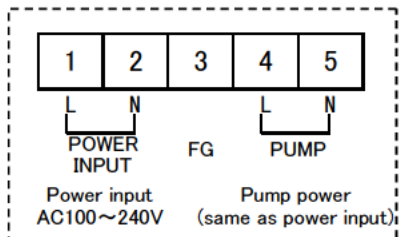


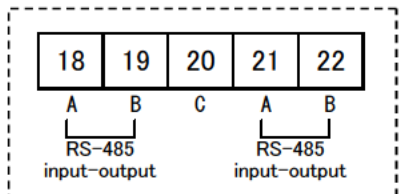
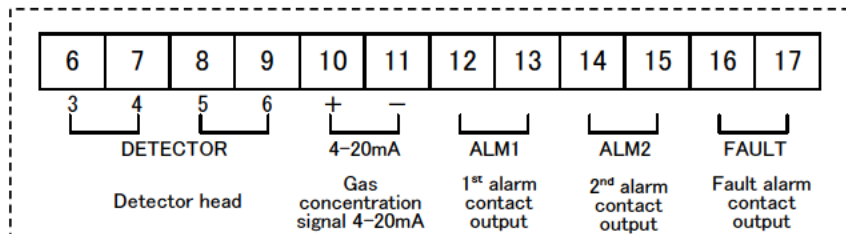
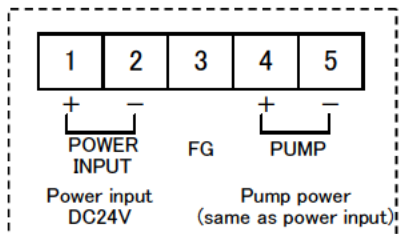
Figure of Terminal Plate

AC specification



- ※ Compatible bar terminal : 216 series(manufactured by WAGO), compatible wire : size 0.5-2.0mm²(stranded wire) or ϕ 0.8-2.0mm(solid wire), bare wire length 10-11mm
- ※ RS-485【option】

DC specification



- ※ Compatible bar terminal : 216 series(manufactured by WAGO), compatible wire : size 0.5-2.0mm²(stranded wire) or ϕ 0.8-2.0mm(solid wire), bare wire length 10-11mm
- ※ RS-485【option】

INDICATOR/ALARM UNIT

NC-6001W SPECIFICATION

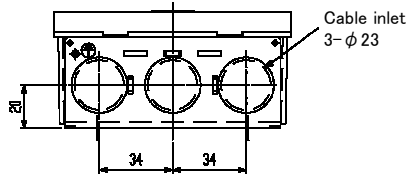
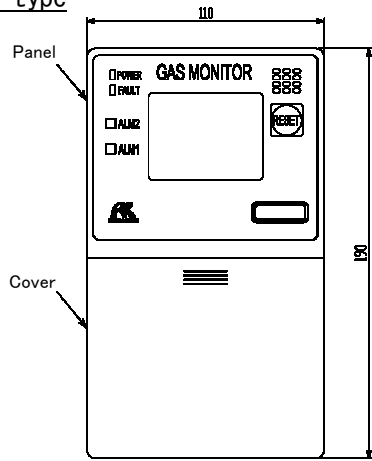
Detectable gas [※]	Combustible gas
Applicable detector head	New ceramic method gas detector head
Gas concentration display	LCD(digital and bar-meter display<three colors:green, orange, red>>)
Power indication	POWER lamp lighting(green)
Gas alarm type	Two-level alarm(H-HH)
Gas alarm indication	1st : ALM1 lamp blinking or lighting(red) · buzzer 2nd : ALM2 lamp blinking or lighting(red) · buzzer
Gas alarm action [※]	Latched or Auto-recover, Lock-in
Gas alarm contact [※]	Each no-voltage contact 1a or 1b(contact output for each alarm) · Non-exciting at normal(exciting at alarm) or exciting at normal (non-exciting at alarm)
Trouble alarm · Self diagnosis	System failure/Detecting circuit failure/Communication failure(digital transmission only)
Trouble alarm indication	FAULT lamp blinking(orange)/content display/buzzer
Trouble alarm action	Auto-recover
Trouble alarm contact [※]	No-voltage contact 1a or 1b · Non-exciting at normal(exciting at alarm) or exciting at normal (non-exciting at alarm)
Contact capacity	AC125V · 1A/DC30V · 1A(resistive load)
Transmission scheme [※]	Analog transmission/Digital transmission 【Option】
Specification of transmission	Analog transmission : DC4~20mA (non-isolated · load resistance less than 300Ω)/Digital transmission : RS-485
Gas detector head signal	Direct signal from sensor
Cable between detector	CVV worth cable(1.25sq or 2.0sq) · 4-core
Distance between detector	Less than 1km by CVV · 2.0sq cable
Various functions	Alarm delay/Suppress/Zero tracking/Peak hold/Calibration history/Alarm trend history/Event history
Power supply [※]	AC specification : AC100~240V±10% · 50/60Hz or DC specification : DC24V±10%(DC21.6~26.4V) 【Option】
Power consumption	AC specification : MAX.15VA(detector head including, pump excluding) DC specification : MAX.8.5W(detector head including, pump excluding)
Utility	AC output for pump power supply(AC100~240V · MAX.15VA) DC output for pump power supply(DC24V · MAX.9W) 【Option】
Initial clear	Approx. 25sec
Operating temperature	-10~50°C (non-rapidly-vary)
Operating humidity	95%RH (non-condensing)
Structure [※]	Wall mounting type or rack mounting type
Outer dimension	Wall mounting type : Approx. 110 (W) × 190 (H) × 54 (D) mm (projection excluding) Rack mounting type : Approx. 110 (W) × 190 (H) × 54 (D) mm (projection excluding)
Weight	Wall mounting type : Approx. 0.58kg Rack mounting type : Approx. 0.65kg

※ Please specify your request when ordering.

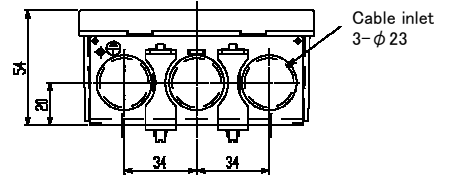
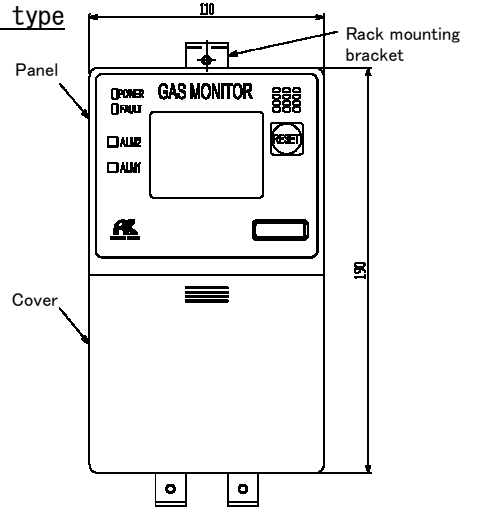
Outline Drawings

Self-latching/auto-reset operation specifications

Wall mounting type

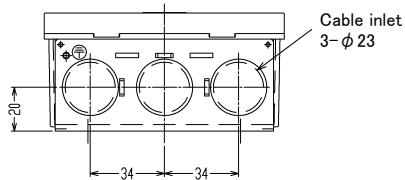
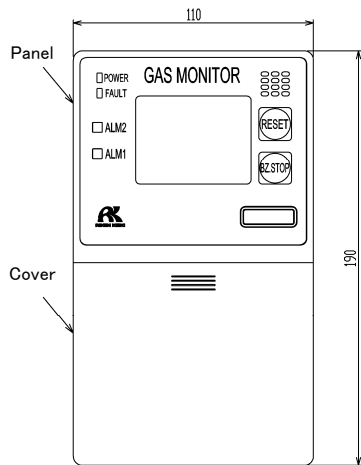


Rack mounting type



Lock-in operation specifications

Wall mounting type



Rack mounting type

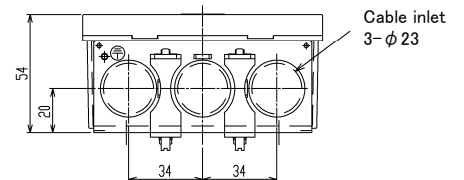
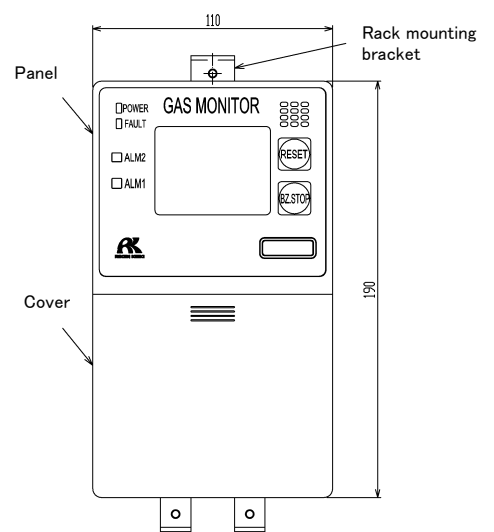
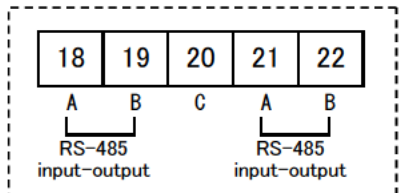
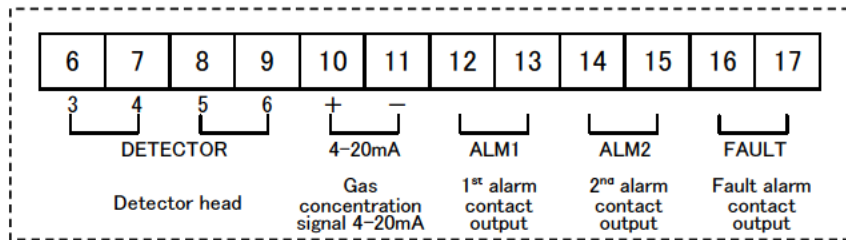
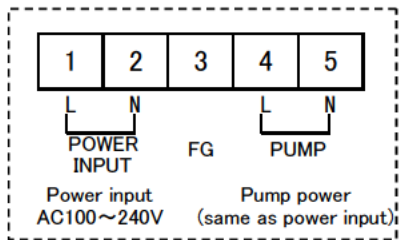


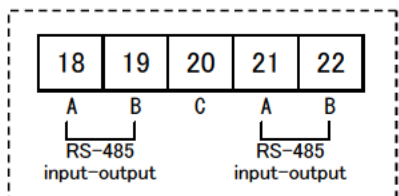
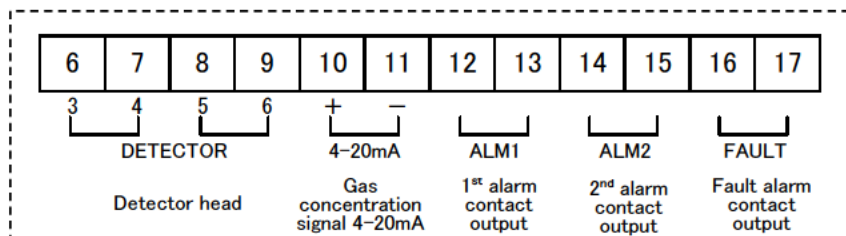
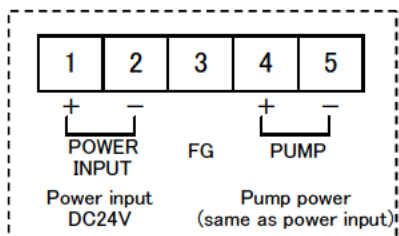
Figure of Terminal Plate

AC specification



- ※ Compatible bar terminal : 216 series(manufactured by WAGO), compatible wire : size 0.5-2.0mm²(stranded wire) or ϕ 0.8-2.0mm(solid wire), bare wire length 10-11mm
- ※ RS-485【option】

DC specification



- ※ Compatible bar terminal : 216 series(manufactured by WAGO), compatible wire : size 0.5-2.0mm²(stranded wire) or ϕ 0.8-2.0mm(solid wire), bare wire length 10-11mm
- ※ RS-485【option】

INDICATOR/ALARM UNIT SP-6001 SPECIFICATION

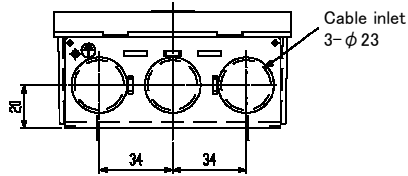
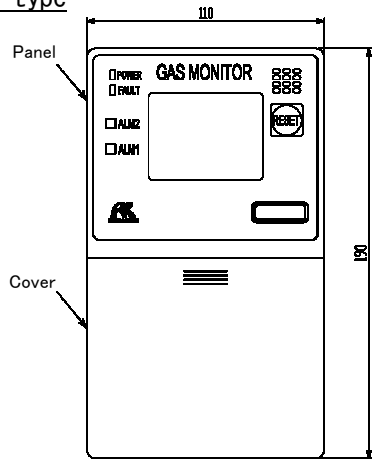
Detectable gas [※]	Combustible gas/Toxic gas
Applicable detector head	Hot-wire semi-conductor method gas detector head
Gas concentration display	LCD(digital and bar-meter display<three colors:green, orange, red>>)
Power indication	POWER lamp lighting(green)
Gas alarm type	Two-level alarm(H-HH)
Gas alarm indication	1st : ALM1 lamp blinking or lighting(red) · buzzer 2nd : ALM2 lamp blinking or lighting(red) · buzzer
Gas alarm action [※]	Latched or Auto-recover, Lock-in
Gas alarm contact [※]	Each no-voltage contact 1a or 1b(contact output for each alarm) · Non-exciting at normal(exciting at alarm) or exciting at normal (non-exciting at alarm)
Trouble alarm · Self diagnosis	System failure/Detecting circuit failure/Communication failure(digital transmission only)
Trouble alarm indication	FAULT lamp blinking(orange)/content display/buzzer
Trouble alarm action	Auto-recover
Trouble alarm contact [※]	No-voltage contact 1a or 1b · Non-exciting at normal(exciting at alarm) or exciting at normal (non-exciting at alarm)
Contact capacity	AC125V · 1A/DC30V · 1A(resistive load)
Transmission scheme [※]	Analog transmission/Digital transmission 【Option】
Specification of transmission	Analog transmission : DC4~20mA (non-isolated · load resistance less than 300Ω)/Digital transmission : RS-485
Gas detector head signal	Direct signal from sensor
Cable between detector	CVV worth cable(1.25sq or 2.0sq) · 4-core
Distance between detector	Less than 1km by CVV · 2.0sq cable
Various functions	Alarm delay/Suppress/Peak hold/Calibration history/ Alarm trend history/Event history
Power supply [※]	AC specification : AC100~240V±10% · 50/60Hz or DC specification : DC24V±10%(DC21.6~26.4V) 【Option】
Power consumption	AC specification : MAX.15VA(detector head including, pump excluding) DC specification : MAX.8.5W(detector head including, pump excluding)
Utility	AC output for pump power supply(AC100~240V · MAX.15VA) DC output for pump power supply(DC24V · MAX.9W) 【Option】
Initial clear	Approx. 25sec
Operating temperature	-10~50°C (non-rapidly-vary)
Operating humidity	95%RH (non-condensing)
Structure [※]	Wall mounting type or rack mounting type
Outer dimension	Wall mounting type : Approx. 110 (W) × 190 (H) × 54 (D) mm (projection excluding) Rack mounting type : Approx. 110 (W) × 190 (H) × 54 (D) mm (projection excluding)
Weight	Wall mounting type : Approx. 0.58kg Rack mounting type : Approx. 0.65kg

※ Please specify your request when ordering.

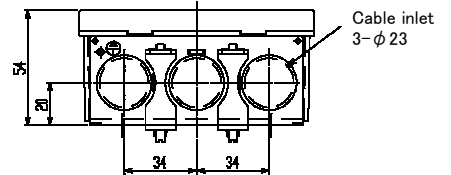
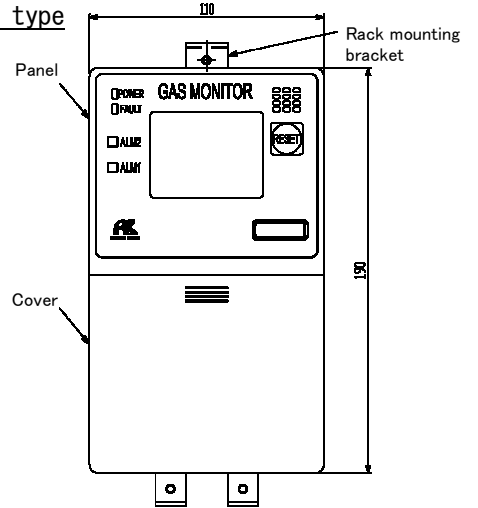
Outline Drawings

Self-latching/auto-reset operation specifications

Wall mounting type

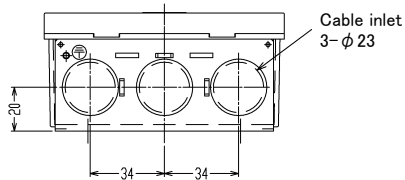
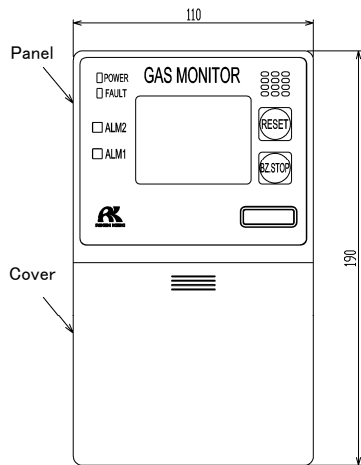


Rack mounting type



Lock-in operation specifications

Wall mounting type



Rack mounting type

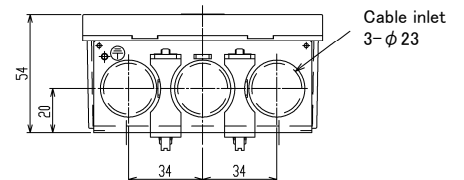
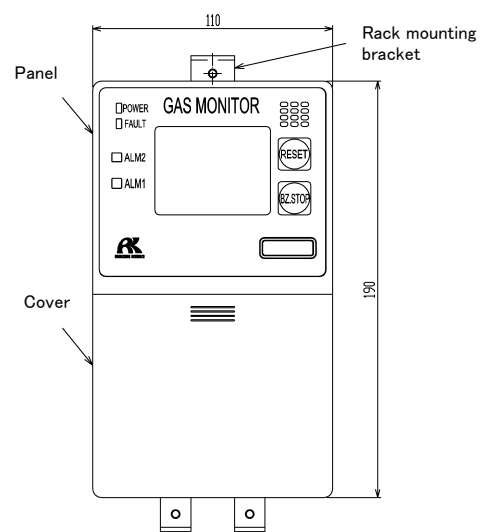
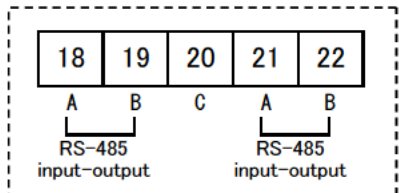
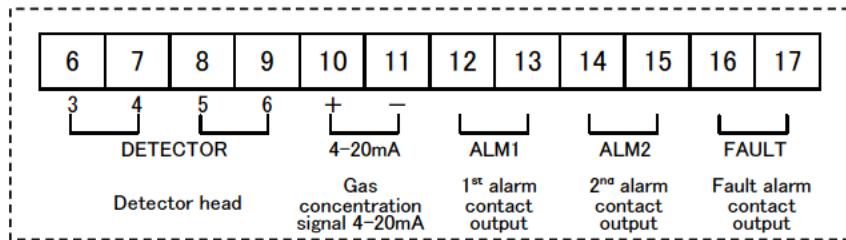
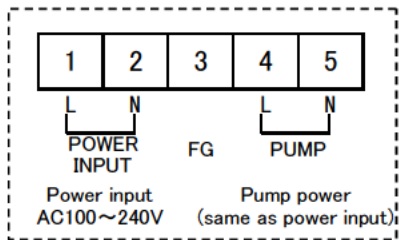


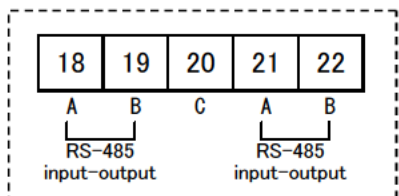
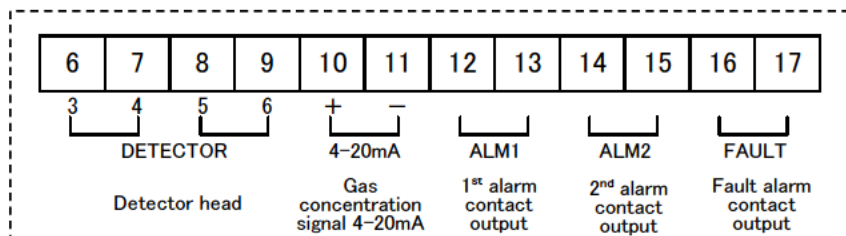
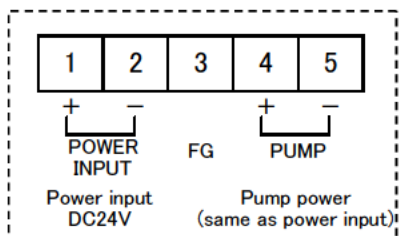
Figure of Terminal Plate

AC specification



- ※ Compatible bar terminal : 216 series(manufactured by WAGO), compatible wire : size 0.5-2.0mm²(stranded wire) or ϕ 0.8-2.0mm(solid wire), bare wire length 10-11mm
- ※ RS-485【option】

DC specification



- ※ Compatible bar terminal : 216 series(manufactured by WAGO), compatible wire : size 0.5-2.0mm²(stranded wire) or ϕ 0.8-2.0mm(solid wire), bare wire length 10-11mm
- ※ RS-485【option】